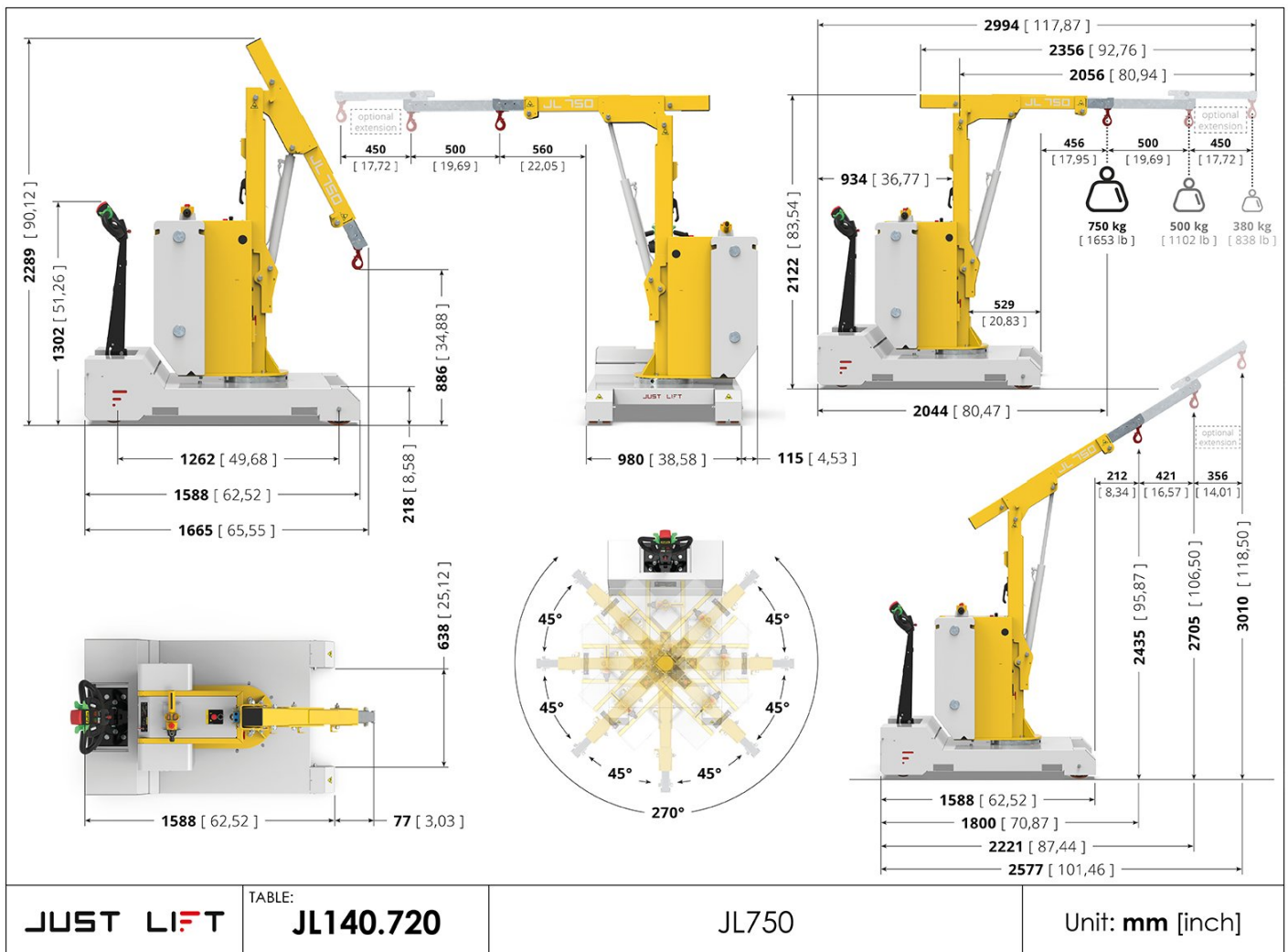


JUST LIFT



JL140.720-6===

Technical drawing



JUST LIFT

TABLE:

JL140.720

JL750

Unit: **mm [inch]**

Technical data

1. Characteristics

Réf.no.	Description	U.M.	Valeur
1.01	Model number		JL140.720-6===
1.02	Model name		JL 750
1.03	Manufacturer		Zallys
1.04	Operator		Pedestrian
1.05	Power unit		Electric
1.07	CE certification		
1.08	Plant tension	V	24

1. Frame characteristics

Réf.no.	Description	U.M.	Valeur
1.80	Frame made of		Steel
1.83	Frame treatment		Polyester powder coating

2. Safety data

Réf.no.	Description	U.M.	Valeur
2.01	Dead man safety system		Sensor on tiller head
2.02	Emergency reverse button		On tiller head
2.04	Creep speed device		Button on tillerhead
2.06	Power supply disconnection device / Emergency stop		Detachable power connector
2.11	Drive controls		Maintained action switch
2.15	Wheels		Wheels protection
2.20	Handarm vibration	m/s ²	<2,5
2.22	Noise level at operator's ears	dB	<70

3. Performances

Réf.no.	Description	U.M.	Valeur
3.01	Max. forward speed	km/h	4,0
3.04	Max. backward speed	km/h	4,0
3.15	Max. lifting capacity	kg	750
3.31	N ° Operators		1
3.60	Arm lifting speed	mm/s	22,00

Réf.no.	Description	U.M.	Valeur
3.61	Arm descent speed	mm/s	15,00
3.62	Arm extension speed	mm/s	7,00
3.63	Arm return speed	mm/s	5,00

3. Technical data of hydraulic tilting system

Réf.no.	Description	U.M.	Valeur
3.81	System pressure	bar	125,00
3.82	Oil type		ISO VG 46
3.83	Oil quantity	l	2,00

4. Drive controls

Réf.no.	Description	U.M.	Valeur
4.01	Type of control		Tillerhead
4.02	Type of start control		Butterfly lever
4.04	Speed control		5 speed button assembled on the tiller head
4.05	Lifting system operated by		Wired pushbutton

5. Standard battery specifications

Réf.no.	Description	U.M.	Valeur
5.01	Batteries		2
5.02	Batteries type		Traction AGM batteries
5.03	Battery voltage	V	12
5.04	Nominal Capacity 5 h	Ah	105
5.05	Nominal Capacity 20 h	Ah	130
5.06	Weight of each battery	kg	33

6. Available chargers

Réf.no.	Description	U.M.	Valeur
6.40	Standard voltage	V	220/240
6.41	Multitension	V	110/240
6.42	Plug		In use in the country of destination

6. Technical data of standard charger

Réf.no.	Description	U.M.	Valeur
6.01	Battery charger		External - high frequency
6.02.1	Input voltage max	V	230
6.03	Input Frequency	Hz	50-60
6.04	battery charger voltage type		Monophase
6.05	Battery charger capacity	Ah	8
6.06	Power consumption during complete charge cycle	kWh	2
6.07	Operating temperature	°C	-20 / +40
6.08	Operation display		Led
6.09	Input fuse	A	5
6.10	Cooling system		Ventilation cooling
6.11	IP degrees of protection		IP20
6.12.1	Width	mm	95
6.12.2	Length	mm	185
6.12.3	Height	mm	55

7. Drive motor

Réf.no.	Description	U.M.	Valeur
7.03	Engine		Electric
7.04	Electricity		Direct current
7.05	Engine voltage	V	24

8. Generic technical data

Réf.no.	Description	U.M.	Valeur
8.01	Transmission system		Mechanical
8.02	Transmission lubrication		In oil bath
8.05	Traction		Front-wheel drive
8.06	Service brake		Electronic
8.08	Parking brake		Electro-Mechanical
8.22	Lifting system operated by		Cable control panel
8.23	Structure		In steel
8.24	Surface treatment		Polyester powder coating

9. Weight

Réf.no.	Description	U.M.	Valeur
9.01	Weight without batteries	kg	1.080
9.09.5	Weight incl. 105/130A AGM batteries	kg	1.146

10. Dimensions

Réf.no.	Description	U.M.	Valeur
10.01.1	Length max	mm	2.994
10.01.2	Length min	mm	1.665
10.02	Width	mm	980
10.03	Height of start control	mm	1.302
10.05.1	Height max	mm	3.030
10.05.2	Height min	mm	2.289
10.11.1	lifting height max	mm	3.010
10.14	Wheelbase	mm	1.262
10.15	Turning circle	m	1,05

11. Standard wheels

Réf.no.	Description	U.M.	Valeur
11.01	Drive wheels		1
11.03	Pivoting wheels no.		2
11.04	Castor wheels		4
11.05.1	Tyre for fixed wheels		Polyurethane (oil resistant)
11.05.2	Tyre for motor wheel		Polyurethane (oil resistant)
11.13	Drive tyres size		200 x 73
11.16	Pivoting wheels diameter	mm	160
11.18	Castor wheels diameter	mm	200